



# RS-StrengthGrader

RS-StrengthGrader is a system that performs machine strength grading of boards. It is a plug-in to RS-BoardscannerQ totally integrated in the existing system software. The system is certified according to European standard (EN-14081) and can be used both for spruce and pine. The lumber can be green, dried, rough or planed.

## INNOVATIVE SCANNING TECHNIQUE

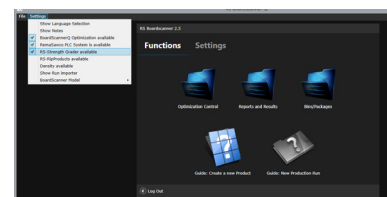
RS-StrengthGrader determines the machine strength class of a board by using a laser-based non-contact measuring system. The fibre angles in the wood are used to calculate a value that makes the board fit in an approved strength model. The fibre angle data is measured with the standard RS-BoardScannerQ system. No extra hardware is necessary. If needed, a density measuring device can be added to the line to achieve even more accurate results in the higher strength grades.

## FLEXIBLE

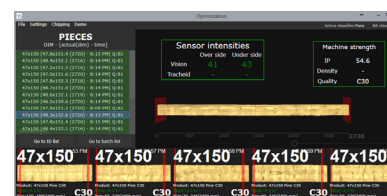
Since the RS-StrengthGrader system doesn't use image data or actual defect recognition, it is also possible to use the application on an RS-BoardsScannerT system that measures fibre dimensions and angles. By using this in a green sorting application, the boards can get a machine strength grading already in the green sorter.

## EASY UPGRADE FOR EXISTING CUSTOMERS

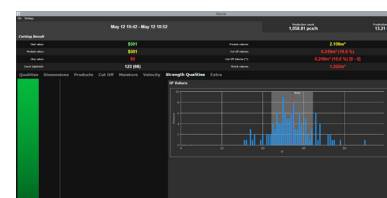
All current users of a BoardScannerQ or -T can upgrade their software to include the RS-StrengthGrader option. No extra hardware is needed and there will be no changes in operator routines.



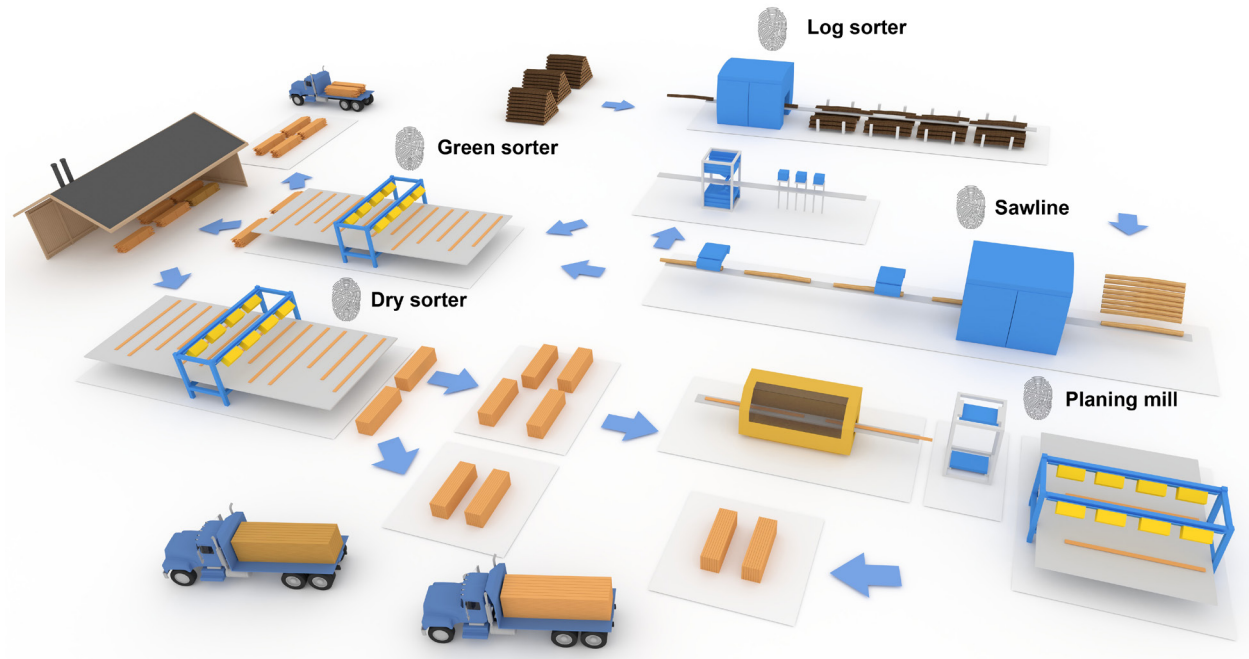
Activation



Result display



Detailed data in the existing interface



## The digital sawmill. Evolved.

RemaSawco's goal is to have all products and systems interact seamlessly within the concept of The Digital Sawmill. This means that each component will not only perform its specific tasks, but also share its data with all other units. With this architecture, traceability and production supervision will be achieved, improving product value and efficiency for the end customer.